



GRANIT
QUALITY PARTS

SCREENS PRODUCT BENCHMARK

CUSTOMER INFORMATION

WINDSCREENS, REAR SCREENS AND DOOR SCREENS

The GRANIT windscreens, rear screen and door screen for agricultural and construction machinery with part numbers 650886605, 650S33045R1, 650886506 and 65015S10207 were tested. The screens were compared with the corresponding products from the original manufacturers.

COMPARISON OF FEATURES

- » Transport packaging for screens
- » Dimensions and thickness of the screen
- » Processing of screens and behaviour in the event of damage

This product comparison was carried out by the GRANIT PARTS in-house laboratory.



TEST RESULTS

TRANSPORT PACKAGING FOR SCREENS

Transport packaging is extremely important for breakable replacement parts. It determines the breakage rate during transport. A screen can only be installed directly at the customer's premises if it arrives without being damaged.

- The transport packaging used by GRANIT and the two agricultural machinery manufacturers that were compared with the GRANIT screens 650886605 and 650S33045R1 has all-round edge protection and a transparent film. This means that it is easy to recognise as containing breakable glass during transport, which reduces the breakage rate. Damage can also be detected immediately upon receipt.
- The manufacturer from the construction machinery sector (compared with the GRANIT screen 65015S10207) also uses a wooden frame closed by two pieces of cardboard and with a 'Caution Glass' sticker on the cardboard.
- The screen from another original agricultural machinery manufacturer (corresponding with the screen 650886506 from GRANIT) is packed in cardboard packaging. The screen is fixed in the box using cardboard cut-outs. A 'Caution Glass' sticker is attached to the box. However, stickers such as this are usually ineffective during transport.

DIMENSIONS AND THICKNESS OF THE SCREEN

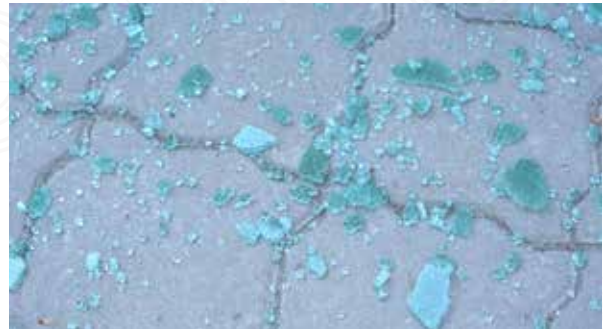
The dimensions of the screen must correspond with the dimensions of the original screen. Differences in dimensions can lead to unwanted air gaps and, worst case scenario, assembly is no longer possible. The glass thickness influences the stability of the screen.



- The dimensions and thickness of the screens from GRANIT are identical to those from the original manufacturers, meaning that changing screens is quick and easy.
- The screens from the original manufacturers can easily be replaced by GRANIT screens.

PROCESSING OF SCREENS AND BEHAVIOUR IN THE EVENT OF DAMAGE

The processing of the screen is an important quality feature. The screens must not have any inclusions that will affect the stability thereof. The use of safety glass reduces the risk of injury to persons in the event of the glass breaking.



- The GRANIT screens do not have any inclusions. The edges of the screens were machined so that they are not sharp, which protects the seal and reduces the risk of injury during installation.
- The use of safety glass by GRANIT and the original manufacturers was confirmed during destructive testing.

CONCLUSION:

- GRANIT screens can be considered equivalent to the screens from the original manufacturers.
- The constant stock of screens from our own GRANIT brand in our central warehouse means that we can guarantee a very short delivery time for these replacement parts. This means that repairs can be carried out quickly and easily.
- GRANIT Quality Parts deliver what they promise and offer an optimum price-performance ratio.